

## View of 41 CS from 3<sup>rd</sup> Ave (from the West)

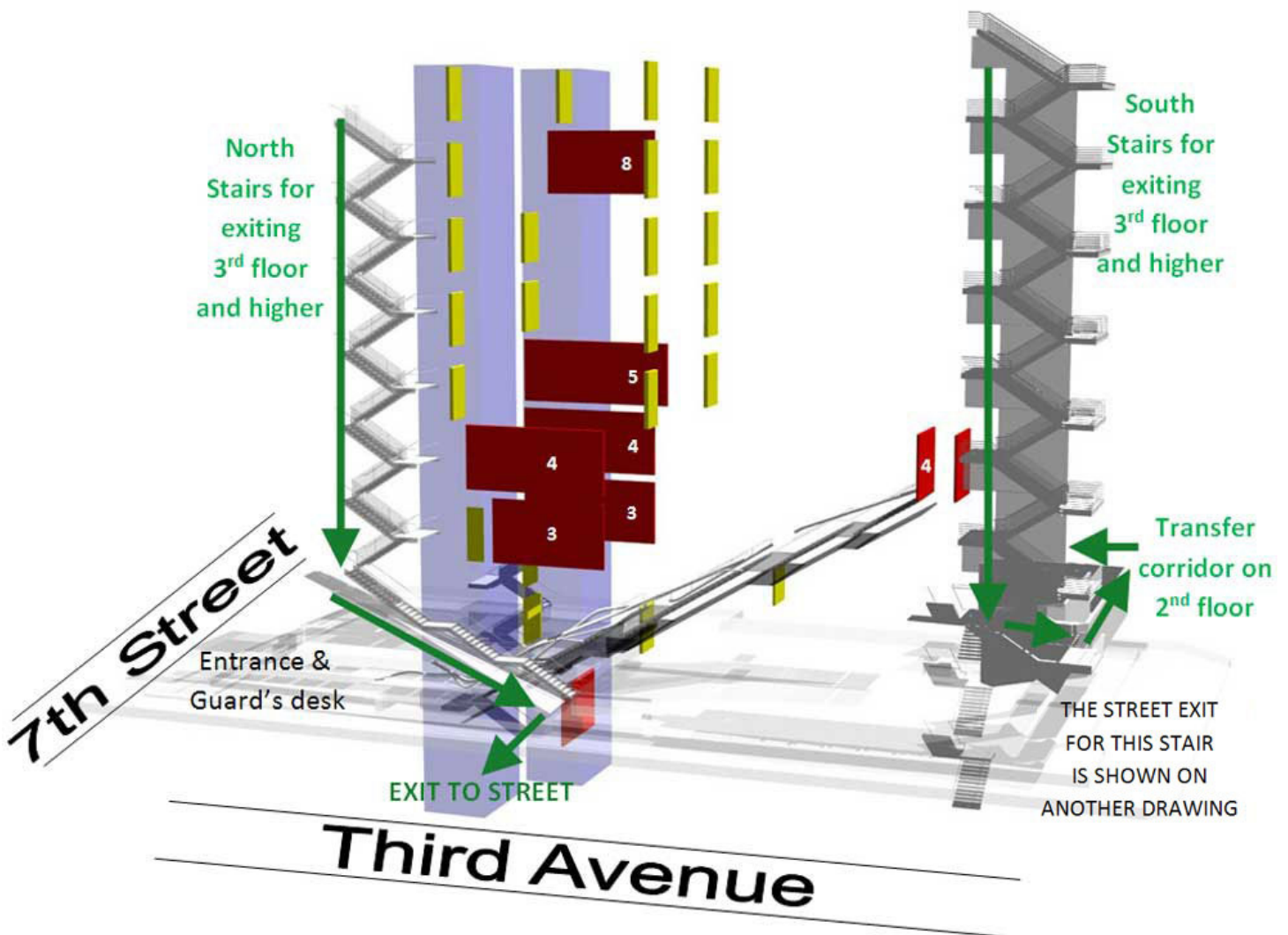
The fire stairs for upper floors are on the 3<sup>rd</sup> Avenue side of the building. Paths to the street are highlighted on this diagram with green arrows.

The Grand Stair is shown, but is NOT a fire stair. If you are already on the Grand Stair during a fire, you may continue to exit the building from it.

Fire shutters are shown in dark red. They isolate the atrium from the spread of smoke/fire, preventing smoke from migrating between floors. Note the pair of fire shutters at the top of the Grand Stair – one to prevent entry to the Grand Stair, the other to close off the cafeteria/lounge adjacent to the top of the stairs. You can still exit the cafeteria by an internal door. One additional fire shutter is on LL1 near the entrance to Rose Auditorium.

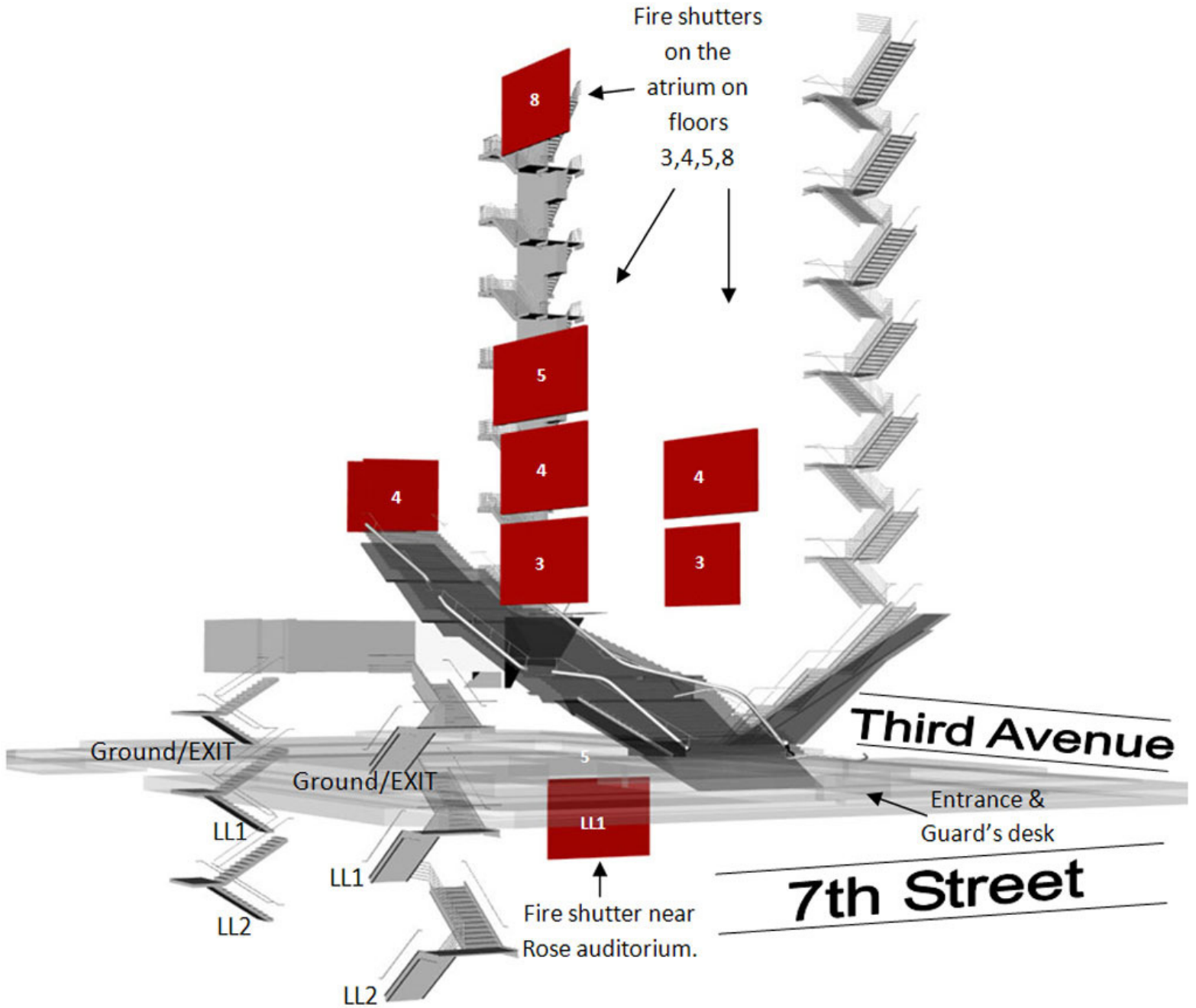
The purple objects are the elevator shafts. Elevators are not in use during a fire.

The yellow rectangles are fire doors in the corridors that will close automatically in the event of a fire. They do not lock shut, but they help slow the spread of fire and smoke.



## View of 41 CS from 7<sup>th</sup> Street (from the North)

- This drawing emphasizes the two fire stairs on the east side of the building that cover the lower levels (LL2, LL1, the ground floor and the 2<sup>nd</sup> floor).
- Also shows the fire shutters that will keep people out of the atrium and off the grand stair during a fire.



## View of 41 CS from 6<sup>th</sup> Street (from the South East)

- Emphasizes the four fire stairs at the four corners of the building. (The Grand Stair is included so you can orient yourself, but it is NOT a fire stair.)
- Note the exit path on the southwest side of the building indicated in green. If you enter the southwest stair on an upper floor, you will have to walk along the “transfer corridor” on 2, then down the southeast stair to get to the street.

